

CARNAHAN · PROCTOR · CROSS, INC.

CONSULTING ENGINEERS · SURVEYORS · PLANNERS

6101 WEST ATLANTIC BOULEVARD, MARGATE, FLORIDA 33063
PHONE: 954-972-3959 FAX: 954-972-4178

APRIL 2001

991010

JSH

ANTHONY GROVES P.U.D.

ANTHONY GROVES PHASE 1

A PORTION OF SECTION 1, TOWNSHIP 44 SOUTH, RANGE 41 EAST,
VILLAGE OF ROYAL PALM BEACH, PALM BEACH COUNTY, FLORIDA

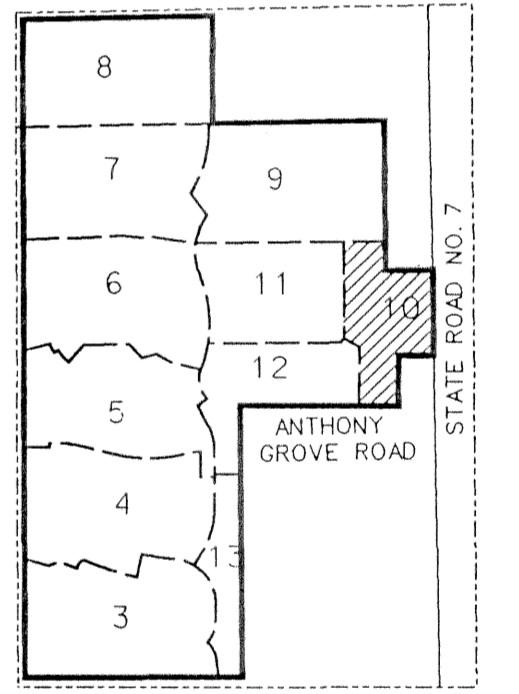
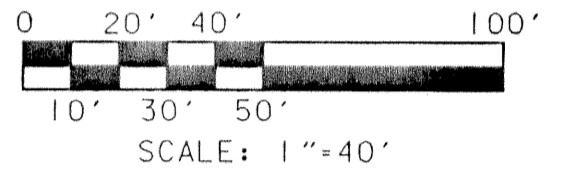
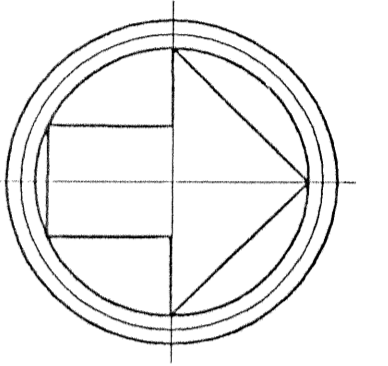
49

(SEE SHEET 11)

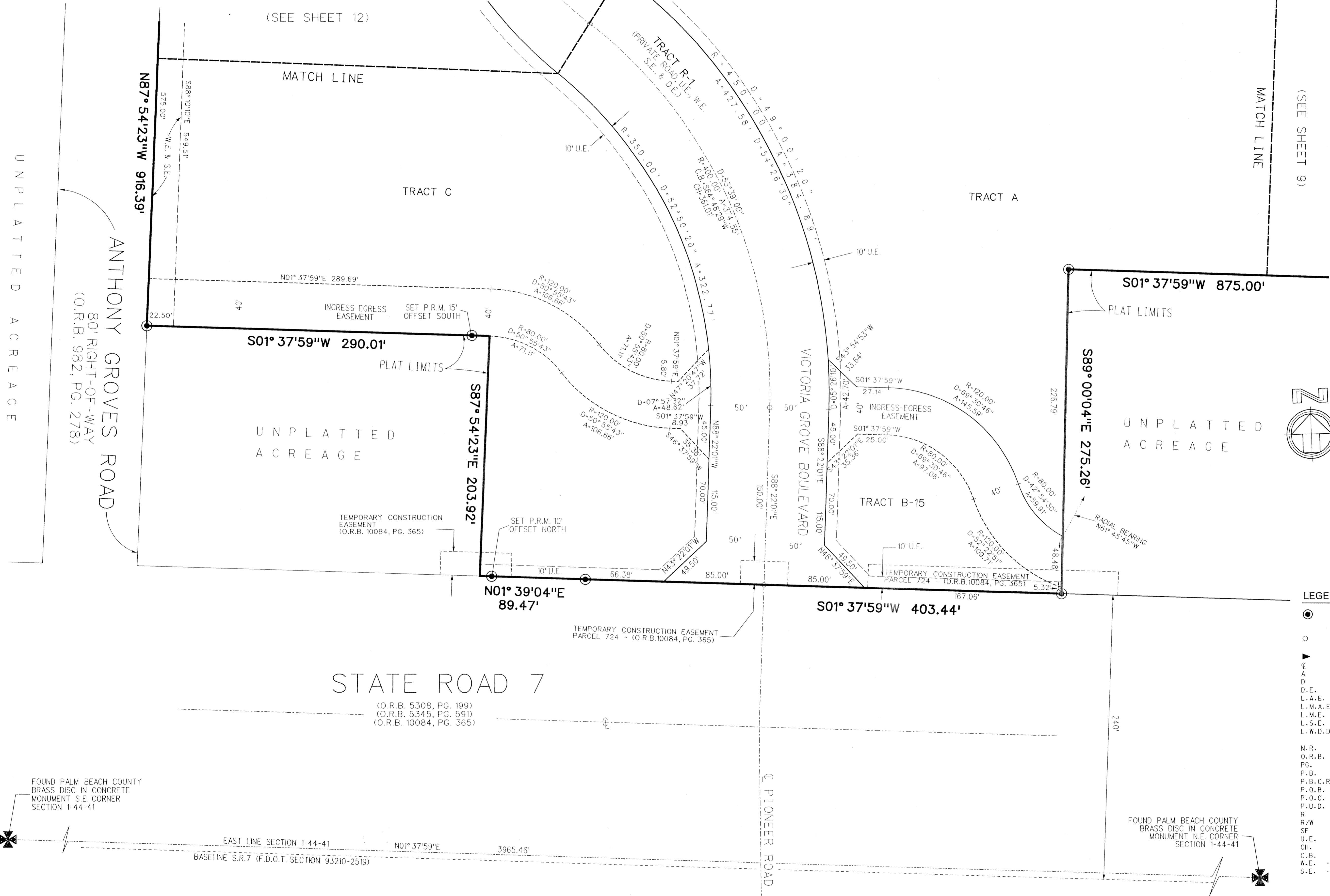
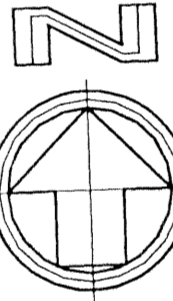
(SEE SHEET 12)

(SEE SHEET 9)

SHEET 10 OF 13



KEY MAP
N.T.S.



LEGEND:

- SET PERMANENT REFERENCE MONUMENT (P.R.M.) • LB2936 UNLESS OTHERWISE NOTED
- PERMANENT CONTROL POINT (P.C.P.)
- ▲ ZERO LOT SIDE
- ⊖ CENTERLINE
- A ARC LENGTH
- D DELTA (CENTRAL ANGLE)
- D.E. DRAINAGE EASEMENT
- L.A.E. LIMITED ACCESS EASEMENT
- L.M.A.E. LAKE MAINTENANCE ACCESS EASEMENT
- L.M.E. LAKE MAINTENANCE EASEMENT
- L.S.E. LIFT STATION EASEMENT
- L.W.D.D. LAKE WORTH DRAINAGE DISTRICT
- N.R. NON-RADIAL
- O.R.B. OFFICIAL RECORDS BOOK
- PG. PAGE
- P.B. PLAT BOOK
- P.B.C.R. PALM BEACH COUNTY RECORDS
- P.O.B. POINT OF BEGINNING
- P.O.C. POINT OF COMMENCEMENT
- P.U.D. PLANNED UNIT DEVELOPMENT
- R RADIUS
- R/W RIGHT-OF-WAY
- SF SQUARE FEET
- U.E. UTILITY EASEMENT
- CH. CHORD
- C.B. CHORD BEARING
- W.E. WATER EASEMENT
- S.E. SEWER EASEMENT

FOUND PALM BEACH COUNTY BRASS DISC IN CONCRETE MONUMENT S.E. CORNER SECTION 1-44-41

EAST LINE SECTION 1-44-41 N01° 37'59"E 3965.46'

BASELINE S.R.7 (F.D.O.T. SECTION 93210-2519)

FOUND PALM BEACH COUNTY BRASS DISC IN CONCRETE MONUMENT N.E. CORNER SECTION 1-44-41

DATE: 10/10/01 10:10:10 AM 10/10/01 10:10:10 AM 10/10/01 10:10:10 AM